


yuviwel[®]
navepegritide
for injection 1.3 · 2.8 · 5.5 mg

The first and only FDA-approved,
once-weekly treatment for use
in children with achondroplasia*

Your Child and YUVIWEL



Learn about treatment with YUVIWEL,
how it can benefit your child, and the
support that's available along the way.

*What is YUVIWEL?

YUVIWEL is a prescription medicine used to increase linear growth in children 2 years and older with achondroplasia with open growth plates (epiphyses).

YUVIWEL is approved under accelerated approval based on an improvement in annualized growth velocity. Continued approval may be contingent upon verification and description of clinical benefit in confirmatory trials.

IMPORTANT SAFETY INFORMATION

What are the possible side effects of YUVIWEL?

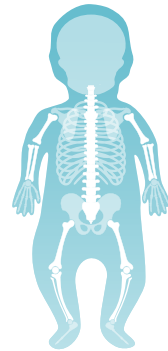
YUVIWEL may cause serious side effects, including risk of low blood pressure. If your child experiences a decrease in blood pressure or symptoms of low blood pressure (dizziness, feeling tired, and/or nausea) while being treated with YUVIWEL, call your child's healthcare provider.

Please see Important Safety Information throughout and full Prescribing Information and Patient Information for YUVIWEL.

What is achondroplasia?

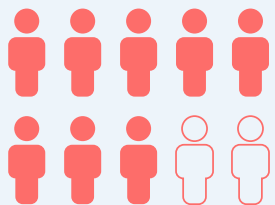
Achondroplasia is a rare genetic condition that affects how cartilage and bones grow and develop.

The condition leads to shorter arms and legs. It can also affect other parts of the body and may cause health challenges with breathing, movement, or development.



What causes achondroplasia?

Achondroplasia is caused by a genetic variation (or change) in a gene called FGFR3. The gene variation is present from birth. Most of the time, this happens by chance. Sometimes, the change is inherited from a parent with achondroplasia.



80%

of children with achondroplasia **are born to parents who do not have the condition.** In the remaining 20% of cases, achondroplasia is inherited from a parent who has the condition.

How does achondroplasia affect bone growth?

Typically, 2 factors work together to ensure balanced bone growth

CNP, a naturally occurring hormone, helps **promote** bone growth

GO

FGFR3, a natural protein, helps **slow** bone growth

SLOW

In achondroplasia,

SLOW

FGFR3 is **overactive** and **slows bone growth too much**

~~GO~~

CNP can't work hard enough to do what it needs to do

As a result, cartilage and bones throughout the body are not able to grow as they were meant to.

YUVIWEL can be part of a treatment plan designed to help your child grow

YUVIWEL has once-weekly dosing. It helps provide a sustained level of CNP (the active ingredient that promotes growth) throughout the week.



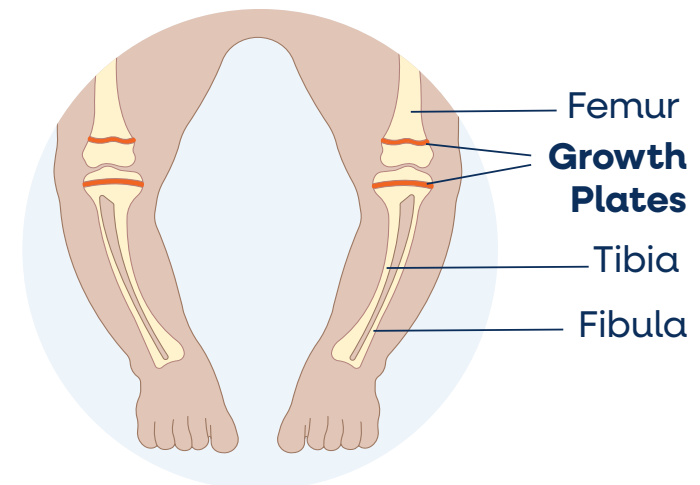
Your child can take YUVIWEL until their growth plates close.



Growth plates are the parts of a child's bones that make growth possible. You may hear growth plates being referred to as "open" or "closed."

- Open growth plates mean growth is still possible
- Closed growth plates mean that bones are fully hardened and no more growth is possible

Growth plates usually close around 15 years of age for girls and 17 years of age for boys. This is important because treatments like YUVIWEL only work in the limited time that growth plates are open.



IMPORTANT SAFETY INFORMATION (cont'd)

What are the possible side effects of YUVIWEL? (cont'd)

The most common side effects of YUVIWEL include injection site reactions (redness, itching, skin discoloration, bleeding, swelling, bruising, pain, and blistering).

Please see Important Safety Information throughout and full [Prescribing Information](#) and [Patient Information](#) for YUVIWEL.

How YUWIWEL may help

YUWIWEL results

The YUWIWEL study was made up of 84 children aged 2 to 12. The study measured how many inches a child grew in a year (at the end of 52 weeks).



- This measurement is called annualized growth velocity (AGV)

In the YUWIWEL study:

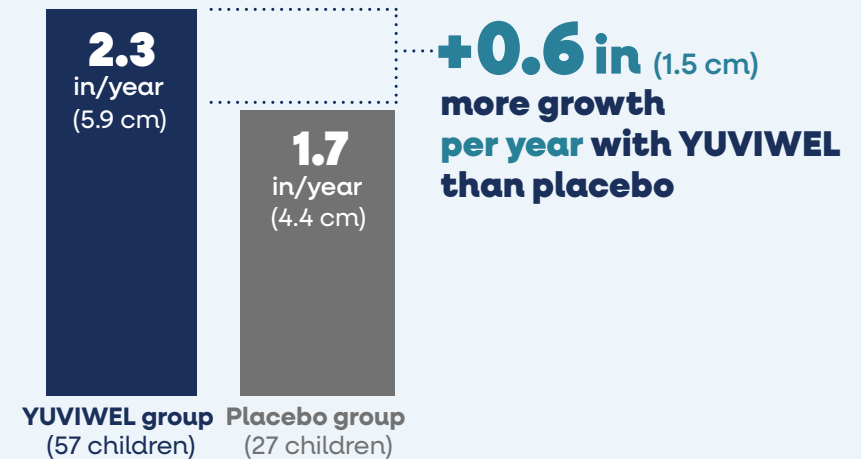
- **Children getting YUWIWEL grew faster**, on average, than those getting placebo (an injection with no medicine)
- **The YUWIWEL group grew 0.6 inches (1.5 centimeters) more per year** than the placebo group
- Children who continued getting YUWIWEL over 2 years maintained their rate of growth throughout treatment

IMPORTANT SAFETY INFORMATION (cont'd)

Before you give YUWIWEL to your child, tell the healthcare provider about all of your child's medical conditions, including if they:

- have kidney problems
- are pregnant or plan to become pregnant. It is not known if YUWIWEL will harm the unborn baby
- are breastfeeding or plan to breastfeed. It is not known if YUWIWEL passes into breast milk

Growth per year with YUWIWEL vs placebo



YUWIWEL works with your child's body to help them grow faster.

Please see Important Safety Information throughout and full [Prescribing Information](#) and [Patient Information](#) for YUWIWEL.

In studies, YUVIWEL was generally well tolerated

The most common side effects were vomiting, injection site reactions, pain in arms and legs, and nausea.

■ Injection site reactions included redness, itching, skin discoloration, bleeding, swelling, bruising, pain, and blistering



3% of children treated with YUVIWEL saw an increase in hair growth either near the injection site or on the limbs, back, and shoulders, compared with 0% of children who received placebo. Rotating the site of injection with each dose can reduce this risk.



In the YUVIWEL study, no one stopped treatment because of side effects.



IMPORTANT SAFETY INFORMATION (cont'd)

Tell the healthcare provider about all the medicines your child takes, including prescription and over-the-counter medicines, vitamins, and herbal supplements.

These are not all of the possible side effects of YUVIWEL. Call your doctor for medical advice about side effects. **You are encouraged to report side effects to FDA at 1-800-FDA-1088 or at www.fda.gov/medwatch. You may also report side effects to Ascendis Pharma at 1-844-442-7236.**



If you have any questions about your child's treatment with YUVIWEL, you can always reach out to your healthcare team or your Patient Access Liaison (PAL) for support.

Please see Important Safety Information throughout and full [Prescribing Information](#) and [Patient Information](#) for YUVIWEL.

What should I know about giving YUWIWEL?

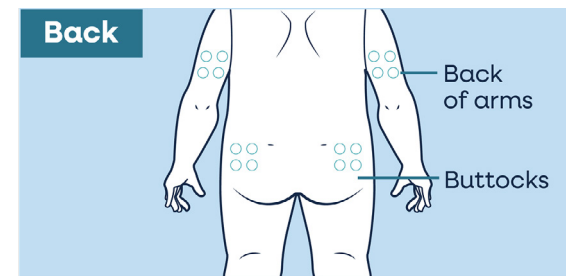
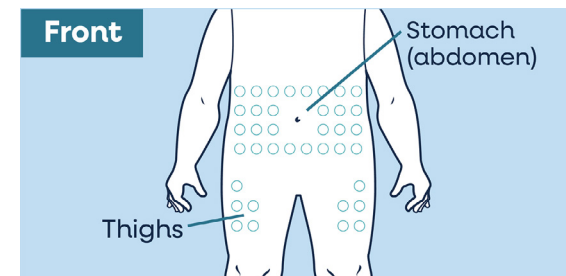
YUWIWEL is a once-weekly injection. It is only ever injected right under the skin with the small, thin needle provided in the Kit. This is called a subcutaneous injection. It should be injected in the abdomen (stomach, 2 inches from the belly button) or thighs. If given by a caregiver, injection in the buttocks or back of arms is also okay.

- Wash hands before preparing YUWIWEL
- Do not inject in skin that is red, swollen, or scarred
- Rotate injection sites every week
 - If the treatment is split between 2 injections, choose 2 different sites
- Keep track of sites from week to week to make sure you are rotating properly
- Read the **Instructions for Use** that come with your child's YUWIWEL for information on how to store, prepare, and give YUWIWEL, as well as how to dispose of YUWIWEL the right way

A Patient Access Liaison (PAL) will help arrange injection training support at your home.

Patients and caregivers should receive appropriate training by a healthcare provider prior to giving YUWIWEL.

Where to inject YUWIWEL



The YUWIWEL dose is based on weight.
Your healthcare team will keep track of how much your child weighs and adjust their dose as needed.

Scan to review the **Instructions for Use** before giving YUWIWEL.



Please see **Important Safety Information** throughout and full **Prescribing Information** and **Patient Information** for YUWIWEL.

YUVIWEL administration and storage options



Once-weekly YUVIWEL can be given at any time of day that fits your family routine best. There's no need to plan around meals, snacks, or bedtimes.



YUVIWEL must be carefully mixed and prepared before administering. Store unmixed YUVIWEL in a refrigerator. YUVIWEL can also be stored at room temperature (up to 86 °F) for up to 6 months. YUVIWEL does not contain preservatives.

- After mixing, YUVIWEL can be stored at room temperature and must be used within 4 hours. Throw away unused medicine

Review the **Instructions for Use** that come with your child's YUVIWEL for information on how to store, prepare, give, and dispose of the medicine.



While it's best for YUVIWEL to be given on the same day each week, sometimes, life happens and plans change. So, it's good to know that **the dosing day can be adjusted to 2 days before or 2 days after the planned dosing day if needed.** Resume once-weekly dosing for the next dose at the usual dosing day.

Missed doses:

- If more than 2 days have passed from the scheduled dosing day, skip the missed dose and give YUVIWEL on the next regularly scheduled day
- There should be at least 5 days between doses

Please see **Important Safety Information** throughout and full **Prescribing Information** and **Patient Information** for YUVIWEL.

Personalized support with the Ascendis Signature Access Program (A·S·A·P)



Receive one-on-one support throughout your treatment journey. Through the Ascendis Signature Access Program (A·S·A·P), a dedicated Patient Access Liaison (PAL)* is assigned to support you.



Scan to enroll in A·S·A·P and connect with support.

*A·S·A·P helps provide patient support services to eligible patients who have been prescribed YUWIWEL for its approved indication.

Your dedicated PAL can help you with:



A direct phone number to reach them



Educational information on YUWIWEL



Information on the prior authorization process and financial assistance options



Help to avoid a gap in treatment



Injection training support

Please see Important Safety Information throughout and full Prescribing Information and Patient Information for YUWIWEL.

Need help paying for YUVIWEL?

Eligible patients with commercial health insurance may pay as little as

\$0 per month*
for YUVIWEL

If you do not have insurance or are underinsured, you may be eligible for treatment at

\$0 through the **Ascendis Patient Assistance Program (PAP)**†

*Eligibility: Federal and state healthcare beneficiaries are ineligible (participants in programs such as Medicaid, Medicare, Medigap, VA, DOD, or TRICARE). Offer not valid for cash-paying patients. Terms and conditions apply. For full terms and conditions and eligibility criteria, visit yuviwel.com/pdf/copay-terms.pdf.

†For full terms and conditions, visit yuviwel.com/pdf/pap-terms.pdf.



Questions about A-S-A-P?

Talk to a member of our support team at 1-844-442-7236. They are available Monday through Friday, 8 AM to 8 PM ET.

Please see Important Safety Information throughout and full [Prescribing Information](#) and [Patient Information](#) for YUVIWEL.

Frequently asked questions (FAQs)

It's natural to have questions about YUVIWEL. Here are some that are common:

1 What is achondroplasia?
Achondroplasia is a rare genetic condition that affects how cartilage and bones grow and develop. The condition leads to shorter arms and legs. It can also affect other parts of the body and may cause health challenges with breathing, movement, or development.

2 How does achondroplasia affect bone growth?
In the body, 2 factors work together to help ensure balanced bone growth: CNP, a naturally occurring hormone, helps promote bone growth, while FGFR3, a natural protein, helps slow bone growth. In achondroplasia, FGFR3 is overactive and slows bone growth too much. CNP can't work hard enough to do what it needs to do. As a result, cartilage and bones throughout the body are not able to grow as they were meant to.

3 What is YUVIWEL?
YUVIWEL is a prescription medicine used to increase linear growth in children 2 years of age and older with achondroplasia whose growth plates (epiphyses) are open.

4 How might YUVIWEL help my child with achondroplasia?
In the 52-week YUVIWEL study, children getting YUVIWEL grew faster, on average, than those getting placebo (an injection with no medicine). The YUVIWEL group grew 0.6 inches (1.5 centimeters) more per year than the placebo group. Children who continued getting YUVIWEL over 2 years maintained their rate of growth throughout treatment.

5 What are the most serious side effects of YUVIWEL?
YUVIWEL may cause serious side effects, including risk of low blood pressure. If your child experiences a decrease in blood pressure or symptoms of low blood pressure (dizziness, feeling tired, and/or nausea) while being treated with YUVIWEL, call your child's healthcare provider.

6 What are the most common side effects of YUVIWEL?
The most common side effects were vomiting, injection site reactions, pain in arms and legs, and nausea.

7 How do I give YUVIWEL to my child?
Patients and caregivers should receive appropriate training by a healthcare provider prior to giving YUVIWEL. It is only ever injected right under the skin with the small, thin needle provided in the Kit. This is called a subcutaneous injection. It should be injected in the abdomen (stomach, 2 inches from the belly button) or thighs. If given by a caregiver, injection in the buttocks or back of arms is also okay. Please refer to the **Instructions for Use** or ask your healthcare team for complete instructions. To learn more, see pages 10-11.

Please see Important Safety Information throughout and full [Prescribing Information](#) and [Patient Information](#) for YUVIWEL.

Only you know what your child needs most. And if they need some extra help with growth, talk to your healthcare provider about your options.

YUVIWEL is a once-weekly injection that can be part of a treatment plan designed to help your child grow.



On average, FDA-approved YUVIWEL helped kids 2-12 years of age with achondroplasia grow faster and taller each year than kids who received placebo in a 52-week study.

IMPORTANT SAFETY INFORMATION (cont'd)

What is YUVIWEL?

YUVIWEL is a prescription medicine used to increase linear growth in children 2 years and older with achondroplasia with open growth plates (epiphyses).

YUVIWEL is approved under accelerated approval based on an improvement in annualized growth velocity. Continued approval may be contingent upon verification and description of clinical benefit in confirmatory trials.

IMPORTANT SAFETY INFORMATION

What are the possible side effects of YUVIWEL?

YUVIWEL may cause serious side effects, including risk of low blood pressure. If your child experiences a decrease in blood pressure or symptoms of low blood pressure (dizziness, feeling tired, and/or nausea) while being treated with YUVIWEL, call your child's healthcare provider.

In studies, YUVIWEL was generally well tolerated

- The most common side effects were vomiting, injection site reactions, pain in the arms and legs, and nausea
 - Injection site reactions included redness, itching, skin discoloration, bleeding, swelling, bruising, pain, and blistering
- 3% of children treated with YUVIWEL saw an increase in hair growth either near the injection site or on the limbs, back, and shoulders, compared to 0% of children who received placebo. Rotating the site of injection with each dose can reduce this risk



The Ascendis Signature Access Program® (A-S-A-P) offers one-on-one support throughout the treatment journey.*

*A-S-A-P helps provide patient support services to eligible patients who have been prescribed YUVIWEL for its approved indication.

Please see Important Safety Information throughout and full Prescribing Information and Patient Information for YUVIWEL.



Scan to explore more about YUVIWEL and how treatment may benefit your child.

USE AND IMPORTANT SAFETY INFORMATION

What is YUVIWEL?

YUVIWEL is a prescription medicine used to increase linear growth in children 2 years and older with achondroplasia with open growth plates (epiphyses).

YUVIWEL is approved under accelerated approval based on an improvement in annualized growth velocity. Continued approval may be contingent upon verification and description of clinical benefit in confirmatory trials.

IMPORTANT SAFETY INFORMATION

What are the possible side effects of YUVIWEL? (cont'd)

The most common side effects of YUVIWEL include injection site reactions (redness, itching, skin discoloration, bleeding, swelling, bruising, pain, and blistering).

Please see Important Safety Information throughout and full Prescribing Information and Patient Information for YUVIWEL.